

Range of colors BMB Medical

DEDICATED SOLUTIONS FOR YOUR PATIENTS' TRANSFERT & WELLBEING



DESCRIPTION

URBAIN TEXTILE

Classification M1 / AM 18 / EN 1021.1-2-3.
Fine grain, mat and gentle to the touch.
Rot-proof cotton base.

COMPOSITION : PVC 83 % / Cotton 17 %

THICKNESS : 1,2 mm +/- 0,1 mm

LIGHT RESISTANCE : >= 6

Grey coating for :

PRELE - CAREO - CARVI - I CARE
CLAVIA LSA - CLAVIA LSA CHIR



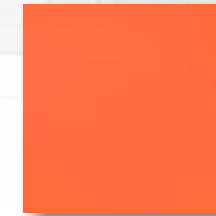
Grey

Color coating for :

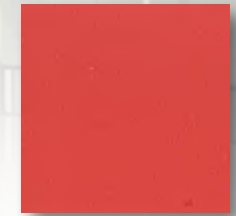
CAREXIA - DIVIA - CLAVIA FCD - CLAVIA FSP



Absinthe



Orange



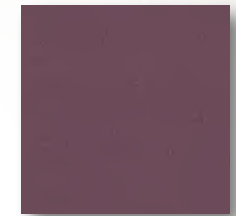
Tomato



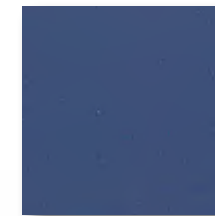
Pansy



Fuchsia



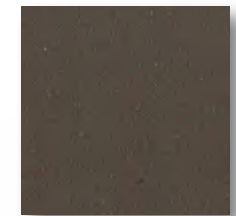
Plum



Deep Ocean



Petrol



Chocolate



Effective
against bacteria
(MRSA)



Solvent-free



Fire
classification



Martindale
abrasion
100000 cycles



Phtalate-free



Waterproof



100 Av. du Formans - CS 11001
01604 TREVOUX Cedex
FRANCE

Phone : +33 (0)4 74 08 71 71
Fax : +33 (0)4 74 08 71 72
E-mail : info@bmb-medical.com
www.bmb-medical.com

© 2017 - Krea - Tél. 06 77 96 82 22 / www.krea-communication.fr

