

# EXTRA BED RANGE





## CONTENTS

Our EXTRA-BED range is suited to Maternity, Pediatric and Neonatal units, as well as any other department where companions may be present.

Combining comfort, ergonomics and style, our products are designed to accommodate and meet the needs of companions, parents, and caregivers.



S Y R E E T A



F E R G U S



C L A S S I Q



C L A S S I Q 2 P L



M A X



C L E M



C O L O R C H A R T



**Comfortable**

**The most compact chair** on the market

**Adaptable** Various options available

**Versatile** Chair-bed with three positions: seated/lying down/chaise longue



## SYREETA CONVERTIBLE CHAIR

The SYREETA companion bed is every bit as comfortable as a lounge chair.

This multi-purpose, convertible chair is ideal for visitors, offering a comfy seat and the comfort of a real bed.



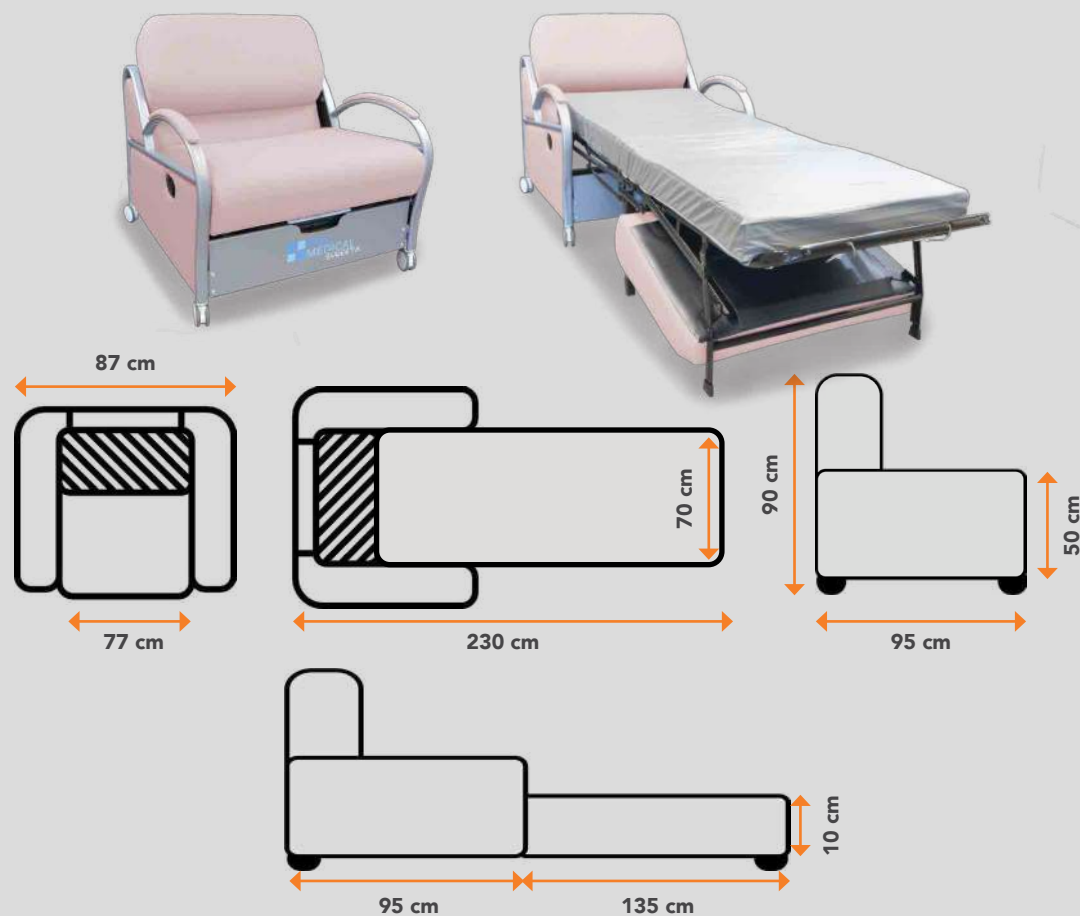
# SYREETA

## SYREETA DIMENSIONS

	LENGTH	WIDTH	HEIGHT	MATTRESS	SEAT
<b>SYREETA 70</b>	90 cm (folded) 230 cm (open)	87 cm	90 cm	188 x 70 x 10 cm	H. 50 cm D. 60 cm

Operational reliability load: 160 kg

### SYREETA 70



Our EXTRA-BED range is suited to Maternity, Pediatric and Neonatal units, as well as any other department where companions may be present. Combining comfort, ergonomics and style, our products are designed to accommodate and meet the needs of companions, parents, and caregivers.

Convertible chair-bed with steel frame. All panels and cushions are retractable for cleaning and repairs.

- Independent seat on crisscross elastic webbing
- Slim armrests
- Sleeping berth: 195 cm long
- Seat made from 35 kg/m<sup>3</sup> high resiliency complex foams (Dacron and HR)
- 4 wheels (ø 80 mm) with independent brakes
- M2 flame retardant cover, 10 color options
- HR foam mattress with a density of 35 kg/m<sup>3</sup>, 10 cm thick
- Bed base: straps on seat/welded metal wire mesh on spring

HR35 mattress + Removable flame retardant PU cover



Wheels (ø 80 mm) with independent brakes



Slim armrests

Faux leather covers: VALENCIA M2

### SOOTHING



**GRAPHITE**  
107-40033



**TAUPE**  
107-0034



**SISAL**  
107-1048



**ROSÉ**  
107-2114

### REFRESHING



**TITAN**  
107-4042



**NIGHT**  
107-2108



**TEAL**  
107-2119

### ENERGIZING



**OLIVE**  
107-50013



**NECTARINE**  
107-6003



**SAFRAN**  
107-6012

Composition: Vinyl/Urethane Topcoat  
Weight: 650 g/m<sup>2</sup>  
Width: 137.00 cm  
Length of parts ≈ 30 lm  
>300,000 Martindale cycles



**FIRE RATING**  
NF P 92-503/M2



# SYREETA



## ACCESSORIES

REFERENCE	NAME
<b>FC100</b>	Reading light + USB port
<b>FC101</b>	Light beams
<b>FC102</b>	Fixed headrest
<b>FC107</b>	2 soft cushions
<b>FC110</b>	Manual recliner with adjustable backrest
<b>FC111</b>	Storage compartment



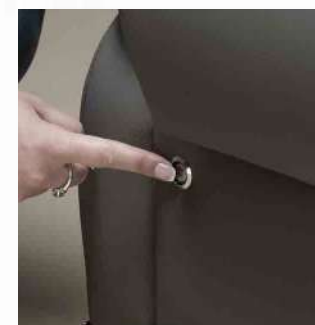
Reading light + USB port  
FC100



Fixed headrest  
FC102



2 soft cushions  
FC107



Light beams  
FC101



Manual recliner with adjustable backrest  
FC110



Storage compartment  
FC111



**Comfortable**

**Adaptable** Various options available

**Versatile** Chair-bed with three positions: seated/lying down/relax



## FERGUS CONVERTIBLE CHAIR

The FERGUS companion bed is every bit as comfortable as a lounge chair.

This multi-purpose, convertible chair is ideal for visitors, offering a comfy seat and the comfort of a real bed.



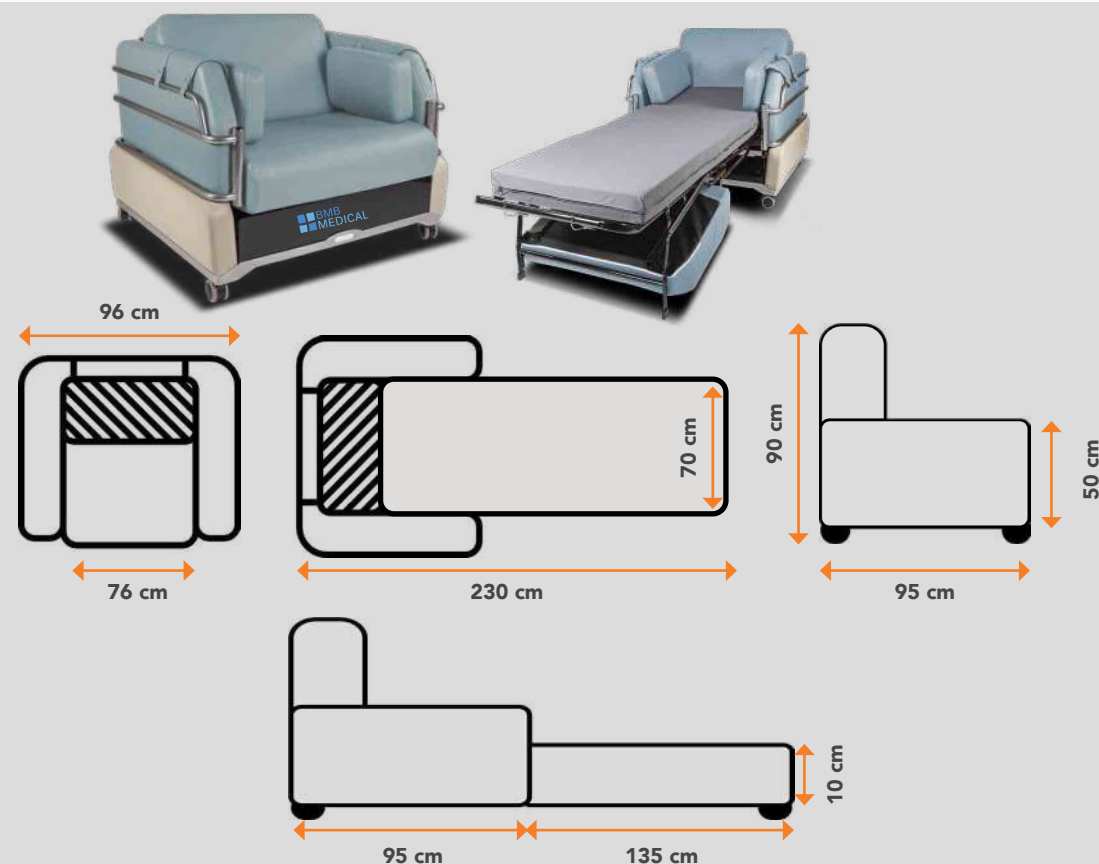
# F E R G U S

## FERGUS DIMENSIONS

	LENGTH	WIDTH	HEIGHT	MATTRESS	SEAT
<b>FERGUS 70</b>	90 cm (folded) 230 cm (open)	96 cm	90 cm 110 cm (head-rest)	188 x 70 x 10 cm	H. 50 cm D. 60 cm

**Operational reliability load: 160 kg**

### FERGUS 70



Our EXTRA-BED range is suited to Maternity, Pediatric and Neonatal units.

Combining comfort, ergonomics and style, our products are designed to accommodate and meet the needs of companions, parents, and caregivers.

Convertible chair-bed with steel frame. All panels and cushions are retractable for cleaning or repairs.

- Independent seat on crisscross elastic webbing
- Retractable armrests
- Sleeping berth: 195 cm long
- Seat made from 35 kg/m<sup>3</sup> high resiliency complex foams (Dacron and HR)
- 4 wheels (ø 80 mm) with independent brakes
- M2 flame retardant cover, 10 color options
- HR foam mattress with a density of 35 kg/m<sup>3</sup>, 10 cm thick
- Bed base: straps on seat/welded metal wire mesh on spring
- Ginkgo Mastic cover on bottom sides

Wheels (ø 80 mm) with independent brakes



HR35 mattress + Removable flame retardant PU cover



Ginkgo Mastic cover on bottom sides



Faux leather covers: VALENCIA M2

### SOOTHING



**GRAPHITE**  
107-40033



**TAUPE**  
107-0034



**SISAL**  
107-1048



**ROSÉ**  
107-2114

### REFRESHING



**TITAN**  
107-4042



**NIGHT**  
107-2108



**TEAL**  
107-2119

### ENERGIZING



**OLIVE**  
107-50013



**NECTARINE**  
107-6003



**SAFRAN**  
107-6012

Composition: Vinyl/Urethane Topcoat  
Weight: 650 g/m<sup>2</sup>  
Width: 137.00 cm  
Length of parts ≈ 30 lm  
>300,000 Martindale cycles



**FIRE RATING**  
NF P 92-503/M2



# FERGUS

## ACCESSORIES

REFERENCE	NAME
<b>FC100</b>	Reading light + USB port
<b>FC101</b>	Light beams
<b>FC103</b>	Adjustable headrest
<b>FC106</b>	2 soft cushions
<b>FC110</b>	Manual recliner with adjustable backrest
<b>FC111</b>	Storage compartment with Ginkgo Mastic cover



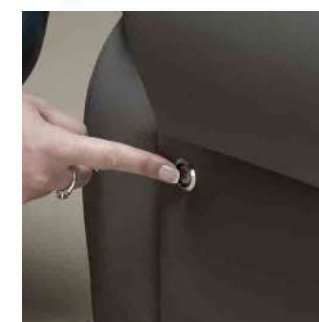
Reading light + USB port  
FC100



Adjustable headrest  
FC103



2 soft cushions  
FC106



Light beams  
FC101



Manual recliner with adjustable backrest  
FC110



FC111 "Mastic" storage compartment







## CLASSIQ CHAIR-BED

**Easy** to use

**Comfortable** full armrests

Lockable storage **compartment**

The CLASSIQ companion bed is the narrowest chair-bed (83 cm) in our product range.

Ideal for small rooms in Maternity, Neonatal or Pediatric units.

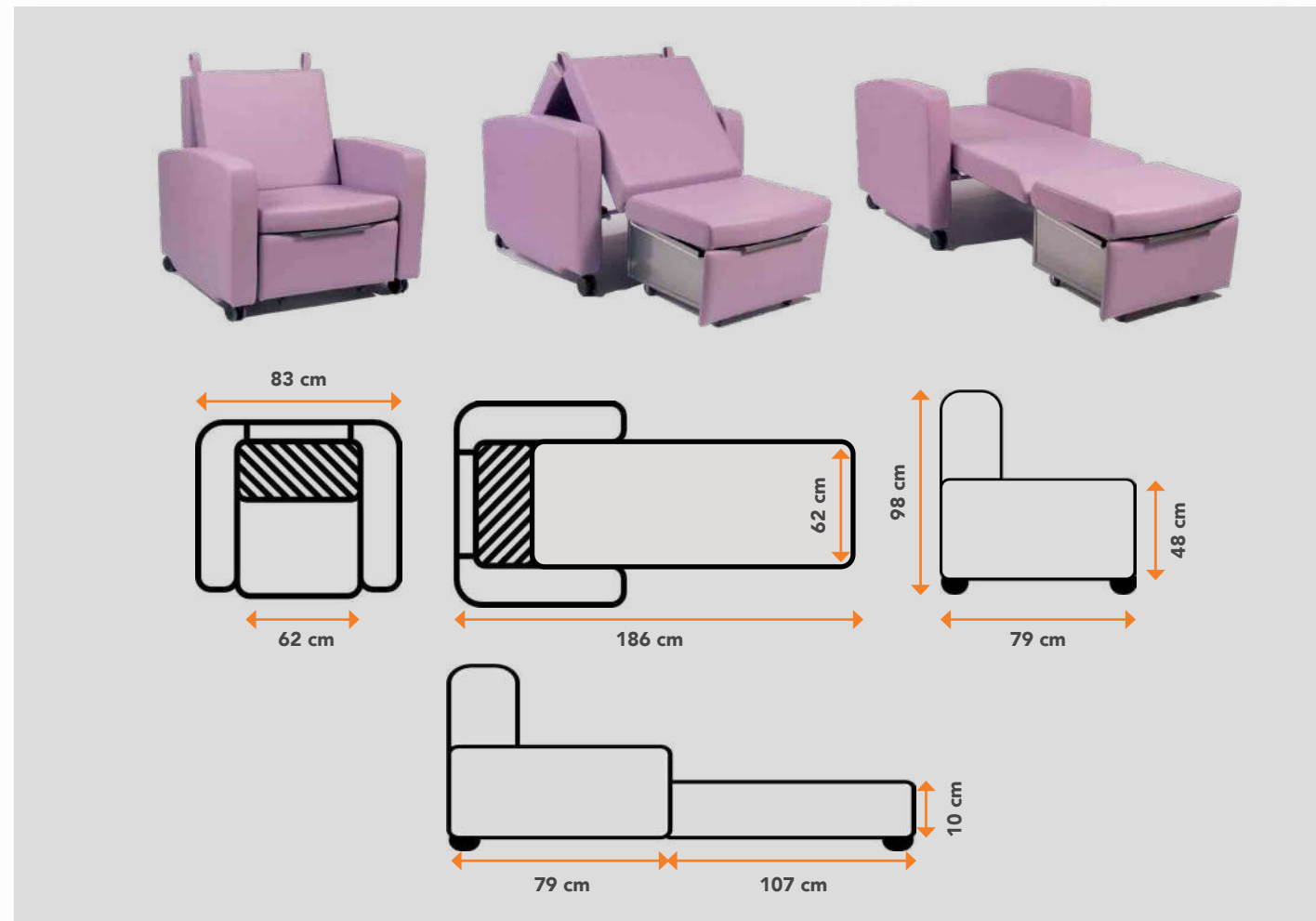


# CLASSIQ

## CLASSIQ DIMENSIONS

	LENGTH	WIDTH	HEIGHT	BERTH	SEAT
<b>OVERALL</b>	79 cm (folded) 186 cm (open)	83 cm	98 cm	186 x 62 x 10 cm	H. 48 cm D. 49 cm

Operational reliability load: 150 kg



Our EXTRA-BED range is suited to Maternity, Pediatric and Neonatal units.

Combining comfort, ergonomics and style, our products are designed to accommodate and meet the needs of companions, parents, and caregivers.

### Convertible chair-bed

- Chair-bed with steel frame
- M1 flame retardant Gingko upholstery
- 4 omnidirectional wheels with brakes (75 mm)
- Storage compartment under the seat (key lock closure)
- Comfortable fixed armrests
- HRfoam with 35 kg/m<sup>3</sup> density.
- Plywood internal frame

HR foam with 35 kg/m<sup>3</sup> density.



Wheels (ø 75 mm) with independent brakes

Standard covers: M1 fire retardant Gingko faux leather

For effective care, clean regularly with pH-neutral soap and a soft brush. Always rinse with clean water. Avoid all commercially-available detergents, solvents and stain removers not included in NF French standards, as well as all products not recommended by us. Immediately clean marks such as pen ink, coffee, wine, eosin or colorants from jeans to prevent permanent staining of the coated fabric.

Composition: 85% PVC, 15% Cotton  
Weight: 830 g +/- 40 g/m<sup>2</sup>  
Width: 138 / 140 cm  
Length of parts ≈ 30 lm



**FIRE RATING**  
M1 (NFP 92503)  
AM18  
BS 5852 crib 5  
B2 (DIN 4102)  
EN 1021.1-2-3  
EN 13501-1  
IMO A652  
JAR 25 / FAR 25.853  
CATB 117



**Color shown:**  
Lilas 013 32 008

Comfortable armrests



Storage compartment under the seat (key lock closure)



**Citrouille**  
013 32 015



**Begonia**  
013 32 046



**Aigue Marine**  
013 32 012



**Endive**  
013 32 032



**Menthe**  
013 32 042



**Taupe**  
013 32 043



**Tomette**  
013 32 014



# CLASSIQ

## ACCESSORIES

REFERENCE	NAME
TENCOUSSIN	Comfortable triangular cushion



Comfortable triangular cushion  
TENCOCUSSIN



**Easy** to use

**Comfortable** full armrests

Lockable storage **compartment**

**1 or 2 people,** as required



CLASSIQ DOUBLE SOFA-BED

The CLASSIQ double companion bed is the ideal sofa-bed for visitors to the Maternity unit.



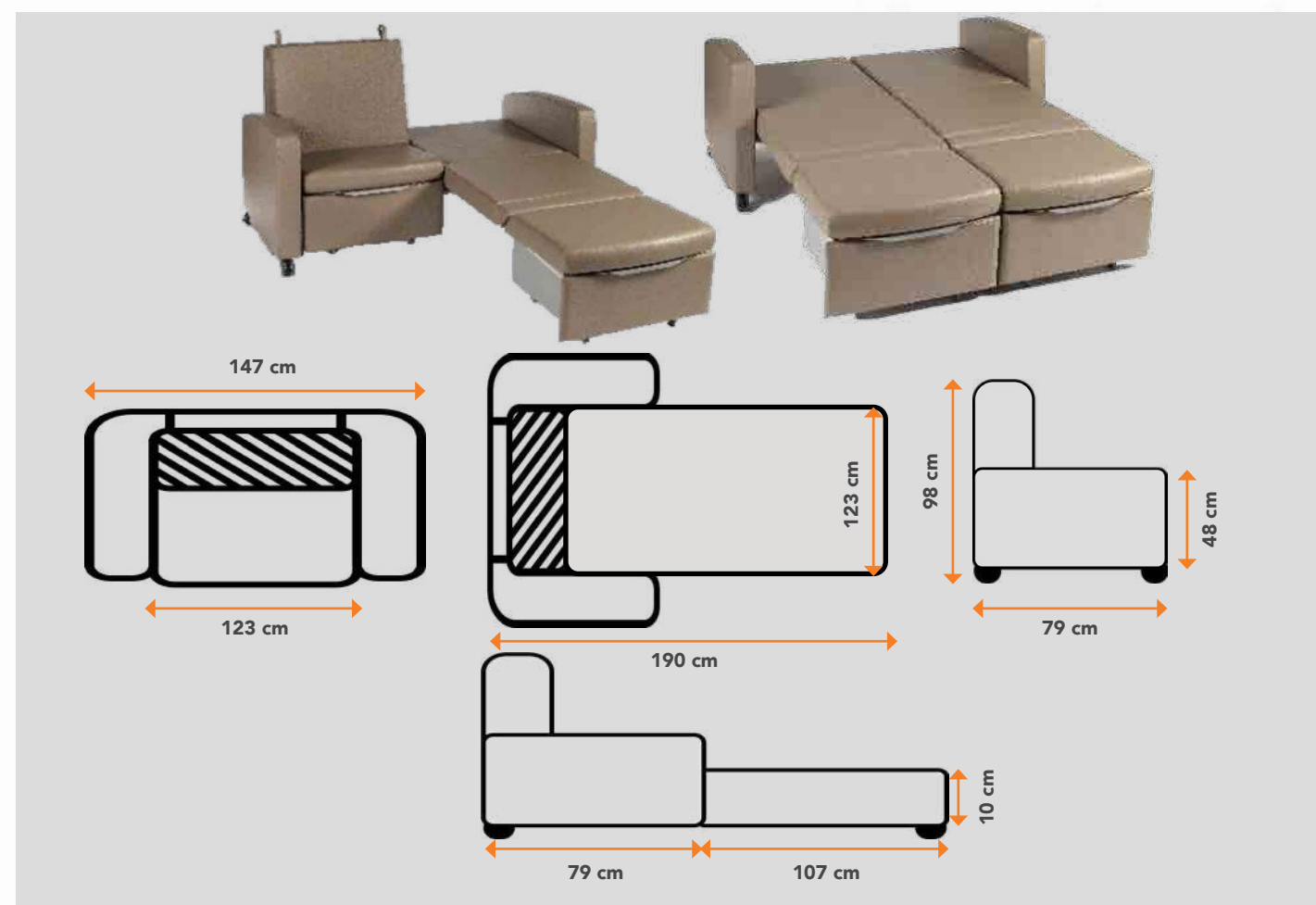


# CLASSIQ2PL

## CLASSIQ2PL DIMENSIONS

	LENGTH	WIDTH	HEIGHT	BERTH	SEAT
<b>OVERALL</b>	79 cm (folded) 186 cm (open)	147 cm	98 cm	190 x 123 x 10 cm	H. 48 cm D. 49 cm

Operational reliability load: 150 kg



Our EXTRA-BED range is suited to Maternity, Pediatric and Neonatal units.

Combining comfort, ergonomics and style, our products are designed to accommodate and meet the needs of companions, parents, and caregivers.

Sofa transforms into a bed

- Sofa-bed with steel frame
- M1 flame retardant Ginkgo upholstery
- 4 omnidirectional wheels with brakes ( 75 mm)
- Storage compartment under the seat (key lock closure)
- Comfortable fixed armrests
- HRfoam with 35 kg/m<sup>3</sup> density.
- Plywood internal frame

Wheels (ø 75 mm) with independent brakes



Can be made into a single or double bed

HR foam with 35 kg/m<sup>3</sup> density.



Storage compartment under the seat (key lock closure)

Standard covers: M1 fire retardant Ginkgo faux leather

For effective care, clean regularly with pH-neutral soap and a soft brush. Always rinse with clean water. Avoid all commercially-available detergents, solvents and stain removers not included in NF French standards, as well as all products not recommended by us. Immediately clean marks such as pen ink, coffee, wine, eosin or colorants from jeans to prevent permanent staining of the coated fabric.

Composition: 85% PVC, 15% Cotton  
Weight: 830 g +/- 40 g/m<sup>2</sup>  
Width: 138 / 140 cm  
Length of parts ≈ 30 lm



**FIRE RATING**  
M1 (NFP 92503)  
AM18  
BS 5852 crib 5  
B2 (DIN 4102)  
EN 1021.1-2-3  
EN 13501-1  
IMO A652  
JAR 25 / FAR 25.853  
CATB 117



**Color shown:**  
Taupe 013 32 043



**Citrouille**  
013 32 015



**Begonia**  
013 32 046



**Aigue Marine**  
013 32 012



**Endive**  
013 32 032



**Menthe**  
013 32 042



**Lilas**  
013 32 008



**Tomette**  
013 32 014



# CLASSIQ2PL



## ACCESSORIES

REFERENCE	NAME
TENCOUSSIN	Comfortable triangular cushion



Comfortable triangular cushion  
TENCOUSSIN





## MAX MOBILE FOLDING BED

Permissible weight of **200 kg**

**Excellent mobility**

Designed for **intensive use**

Ideal for **facilitating daily decontamination**

The MAX companion bed is ideal for overnight visitors to your facility.

Its PVC mattress support replaces wooden slats or electro-welded mesh, which considerably reduces breakages.

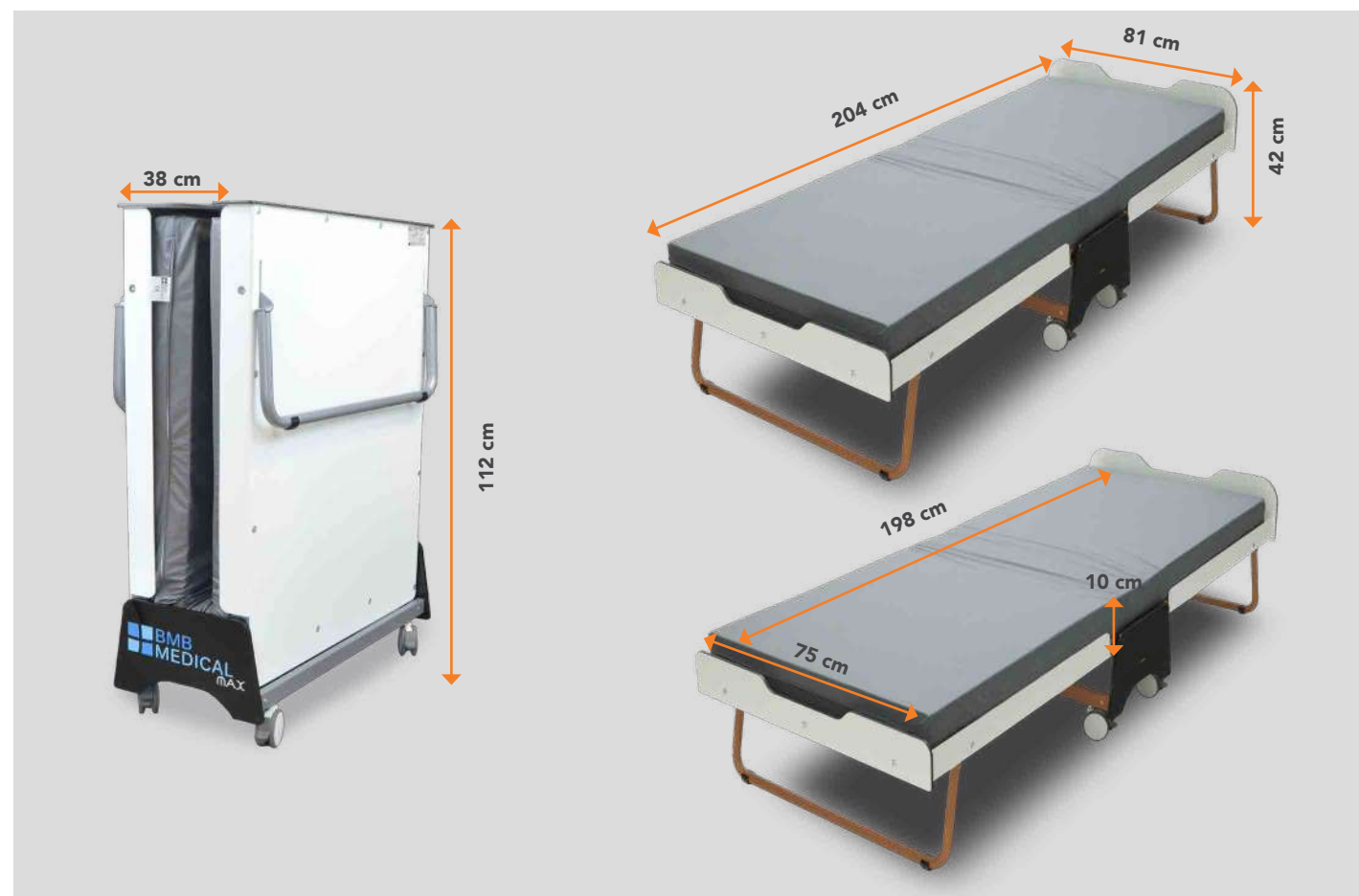
Easy to unfold and designed for intensive use, the Max has been designed and developed to meet the needs of companions as well as nursing staff.



## MAX80 DIMENSIONS

	LENGTH	WIDTH	HEIGHT	MATTRESS
<b>OVERALL</b>	38 cm (folded) 204 cm (open)	81 cm	112 cm (folded) 42 cm (open)	198 x 75 x 10 cm

**Operational reliability load: 200 kg**



Our EXTRA-BED range is suited to Maternity, Pediatric and Neonatal units.

Combining comfort, ergonomics and style, our products are designed to accommodate and meet the needs of companions, parents, and caregivers.

Folding mobile bed with aluminum frame. The entire frame can be disassembled for repairs.

- Folding bed intended for intensive hospital use
- 4 wheels ø 80 mm with independent brakes
- HR foam mattress with a density of 35 kg, 10 cm thick
- M1 fire retardant polyurethane mattress cover
- Aluminum frame
- Oxidized steel feet
- Mattress support made from white synthetic material, ideal for daily cleaning

HR35 mattress + Removable flame retardant PU cover



Easy to open



Wheels (ø 80 mm) with independent brakes



Mattress support made from white synthetic material



**Three positions:** Seated / Ultra comfort / folded

**Space saving**

**Easy** to use

**Comfort** of an armchair



## CLEM FOLDING LOUNGE CHAIR

The CLEM is a lounge chair designed for companions or custodial staff.

With its small dimensions, the CLEM offers ease of use and saves on space.



# C L E M



## C L E M DIMENSIONS

	LENGTH	WIDTH	HEIGHT
OVERALL	85 cm (chair position) 162 cm (lying position)	70 cm	115 cm (chair position) 80 cm (lying position) 98 cm (folded)
MATRESSES	155 cm	70 cm	

Operational reliability load: 140 kg



Our EXTRA-BED range is suited to Maternity, Pediatric and Neonatal units.

Combining comfort, ergonomics and style, our products are designed to accommodate and meet the needs of companions, parents, and caregivers.

Foldable relaxation chair with steel structure. All the cushions are retractable for cleaning or repairs.

- Manual folding relaxation chair
- Reclining, with ultra-comfort position: places the legs slightly above the heart to provide optimal well-being.
- Steel structure ø 20 mm.
- Foam HR 25 Kg - 7 cm thick
- Fixed black polypropylene armrests
- Retractable headrest
- High stability
- Foldable
- Fireproof M2 coating, 10 colors
- Chair weight : 9 kg

25 kg/m³ HR foam - 7 cm thick  
M2 fire retardant cover



Fixed black polypropylene armrests



Retractable headrest



Faux leather covers : VALENCIA M2

### SOOTHING



GRAPHITE  
107-40033



TAUPE  
107-0034



SISAL  
107-1048



ROSÉ  
107-2114

### REFRESHING



TITAN  
107-4042



NIGHT  
107-2108



TEAL  
107-2119

### ENERGIZING



OLIVE  
107-50013



NECTARINE  
107-6003



SAFRAN  
107-6012

Composition: Vinyl/Urethane Topcoat  
Weight: 650 g/m2  
Width: 137.00 cm  
Length of parts ≈ 30 lm  
>300,000 Martindale cycles



FIRE RATING  
NF P 92-503/M2



# VALENCIA M2

## SOOTHING



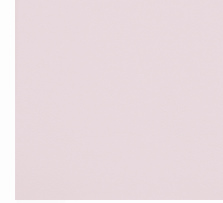
**GRAPHITE**  
107-4003



**TAUPE**  
107-0034

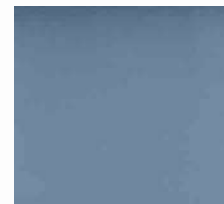


**SISAL**  
107-1048

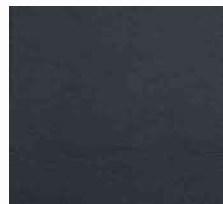


**ROSÉ**  
107-2114

## REFRESHING



**TITAN**  
107-4042



**NIGHT**  
107-2108



**TEAL**  
107-2119

## ENERGIZING



**OLIVE**  
107-5001



**NECTARINE**  
107-6003



**SAFRAN**  
107-6012

## COLOR CHART



### FIRE RATING

NF P 92-503/M2

COMPOSITION: Vinyl/Urethane Topcoat

WEIGHT: 650 g/m<sup>2</sup>

WIDTH: 137.00 cm

LENGTH OF PARTS ≈ 30 lm

### FINISHES AND TREATMENTS

- Antibacterial protection
- Antifungal protection
- Antimycotic protection
- PERMABLOK3®
- Stain-resistant finish
- > 300,000 Martindale cycles (EN ISO 12947: 1999 Part 2)
- Cold crack -23°C
- Mold-resistant back and front
- UV resistance: XENOTEST DIN 54004/NTC 1479
- EN 71-3 Toy Safety Standard (migration of certain elements)
- 2005/84/EC (phthalates in toys and childcare articles)
- Resistant to sulfide stains
- Antistatic finish



Tel: +33 (0)4 74 08 71 71  
Fax: +33 (0)4 74 08 71 72  
[info@bmb-medical.com](mailto:info@bmb-medical.com)

100 Av. du Formans - CS 11001  
01604 Trevoux Cedex  
France

[www.bmb-medical.com](http://www.bmb-medical.com)