

# EMERGENCY AND REST CHAIR KYELLE



**Adaptable** Stretcher position

**Versatile,** Adapted to different units

**Easy to use,** all movements are manual



## MANUAL CHAIR KYELLE

The KYELLE is a manual chair, for reception and transfer, suitable for emergency units and other hospital departments.

Its robust and ergonomic design makes it a real multi-purpose product.

The KYELLE is an emergency reception chair but also a rest chair.



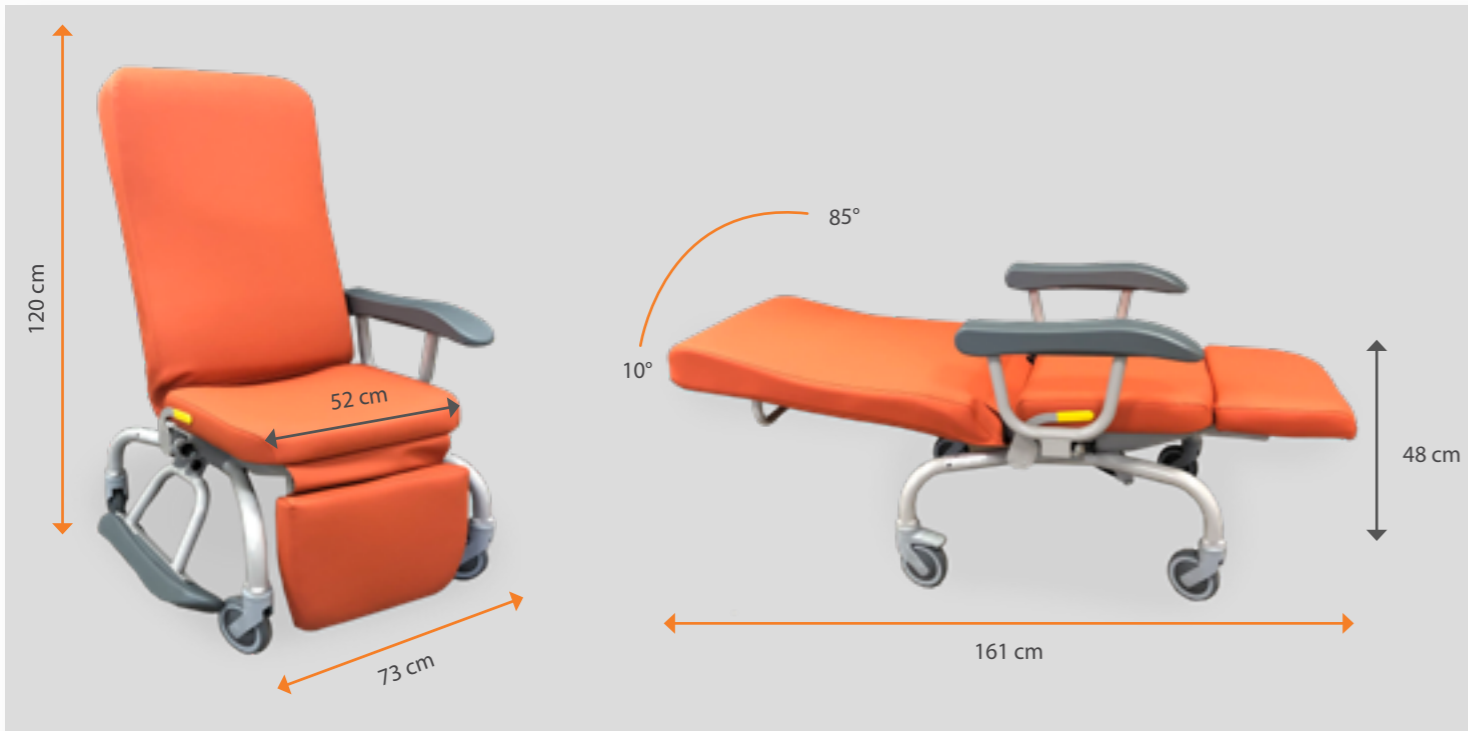
# KYELLE

## KYELLE DIMENSIONS

	LENGHT	WIDTH	HEIGHT
OVERALL	76 cm in sitting position 161 cm in lying position	73 cm	120 cm
SITING		52 cm	48 cm

PRODUCT WEIGHT : 27 Kg to 34 kg (depending on model)

SAFE WORKING LOAD : 200 Kg



NO CONTRACTUAL PHOTOS - ACCESSORIZED PRODUCTS

### Manual chair with epoxy coated steel structure

- Fixed backrest inclined at 85°
- Epoxy coated steel frame
- Assembled on 4 pads (2 back pads with integrated casters)
- Fixed polyurethane armrests
- Foam upholstery thickness 8cm
- Unclippable seat - Ergonomically shaped backrest - M1 fireproof PVC covering
- Range of colors URBAN



Fixed polyurethane armrests



Foam upholstery thickness 8cm

### Faux leather covers : URBAN TEXTILE



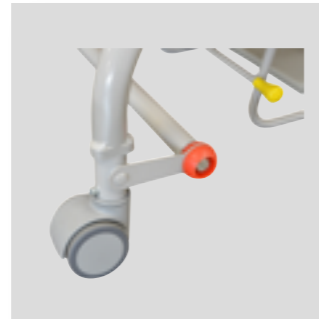
URBAN  
Fine grain, mat and gentle to the touch.  
Rot-proof cotton base.  
Composition : Mass-processed PVC 86%, Cotton 14%.  
Thickness : 1,04 mm +/- 10%  
Effective against bacteria (MRSA)  
Phtalate-free  
Solvent-free  
Martindale abrasion 100 000 cycles  
Waterproof



FIRE PROOF  
M1



4 casters of 125mm diameter:  
2 free casters at the front, 2 rear casters  
with independent brakes  
KYRF



2 free casters at the front of  
125mm diameter, 2 centrally  
braked rear casters of 75mm  
diameter  
KYRS



Ergonomically shaped polyu-  
rethane retractable armrests.  
KYAC2



Backrest adjustable from  
85 to 10° assisted by gas  
spring.  
KYRB



Leg rest synchronized with the  
back rest adjustable from 0 to  
100°  
(KYRB mandatory)  
KYR1



Independent leg rest adjustable  
from 0 to 100° assisted by  
gas spring.  
KYR2



Support for meal tray on the right/left  
side of the patient  
KYSPR-D or KYSPR-G



Small Shelf : 42 x 32 cm  
(KYSPR-D or KYSPR-G man-  
datory)  
FA009P



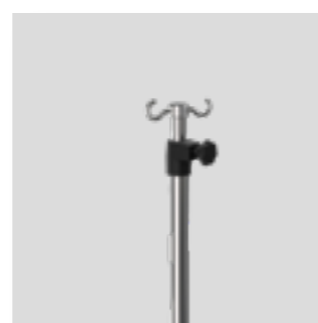
Large Shelf : 81 x 41 cm  
(KYSPR-D or KYSPR-G mandatory)  
FA009G



Reversible push bar  
(sitting and lying position)  
(KYRF or KYRS mandatory)  
KYBP2



Fixed push bar  
(KYRF or KYRS mandatory)  
KYBP1



Removable IV Pole  
(KYSTR mandatory)  
TSR2

REFERENCE	DESCRIPTION
KYRF	Version assembled on 4 casters of 125mm diameter: 2 free casters at the front, 2 rear casters with independent brakes
KYRS	Version assembled on 4 casters : 2 free casters at the front of 125mm diameter, 2 centrally braked rear casters of 75mm diameter
KYRD	Front directional wheel (KYRF or KYRS mandatory)
KYAC2	Ergonomically shaped polyurethane retractable armrests.
KYRB	Backrest adjustable from 85 to 10° assisted by gas spring. (Gas cylinders)
KYR1	Leg rest synchronized with the back rest adjustable from 0 to 100°. (KYRB mandatory) (Gas cylinders)
KYR2	Independent leg rest adjustable from 0 to 100° assisted by gas spring. (Gas cylinders)
KYRP	Retractable footrest (KYRF or KYRS mandatory)
KYBP1	Fixed push bar (KYRF or KYRS mandatory)
KYBP2	Reversible push bar (sitting and lying position) - (KYRF or KYRS mandatory)
KYCC	Comfort headrest cushion
TSR2	Removable IV pole, 2-stage, 2 hooks (KYSTR mandatory)
TSR4	Removable IV pole, 2-stage, 4 hooks (KYSTR mandatory)
KYSTR	IV Pole holder (on both sides of the product)
KYSPR-D	Support for meal tray on the right side of the patient (compatible with the KYSPR-G)
KYSPR-G	Support for meal tray on the left side of the patient (compatible with the KYSPR-D)
FA009P	Small Shelf : 42 x 32 cm (KYSPR-D or KYSPR-G mandatory)
FA009G	Large Shelf : 81 x 41 cm (KYSPR-D or KYSPR-G mandatory)



# URBAN TEXTILE M1



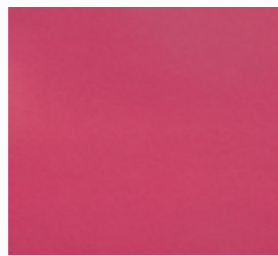
ABSINTHE



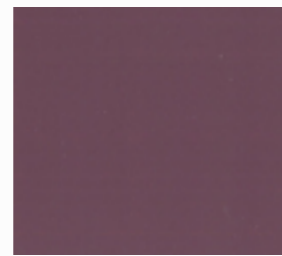
TOMATO



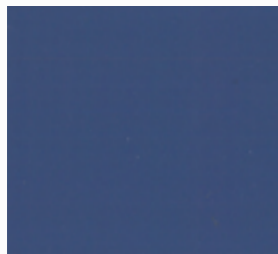
PANSY



FUCHSIA



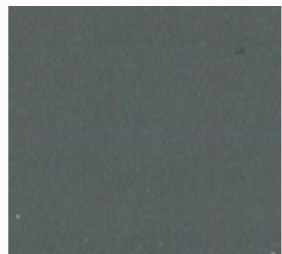
PLUM



DEEP OCEAN



PETROLE



GREY

## COLOR CHART



### CLASSIFICATION

M1

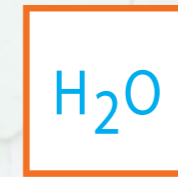
Fine grain, mat and gentle to the touch.  
Rot-proof cotton base.

Composition : Mass-processed PVC 86%, Cotton 14%.

Thickness : 1,04 mm +/- 10%



Effective against bacteria(MRSA)



Solvent-free



Phtalate-free



Martindale abrasion  
1000000 cycles



Waterproof

A medical professional must always rely on his or her own professional clinical judgment when deciding whether to use a product(s) when treating a particular patient.

A healthcare professional anyway, refers to the package insert, product label and/or instructions for use before using any BMB MEDICAL product.

The products depicted are CE marked in accordance with EU Regulations and Directives.

BMB MEDICAL – 100 Avenue du Formans – CS 11001 – 01604 TREVOUX CEDEX – FRANCE

Tel : +33 474 08 71 71 – Fax : +33 474 08 71 72 – email : info@bmb-medical.com

Sarl au capital de 600 000 € - RCS Bourg en Bresse 89B652

SIRET : 950 413 229 00036 – Code NAF : 3250A – Code TVA : FR68 950 413 229

[www.bmb-medical.com](http://www.bmb-medical.com)



Tél : +33 (0)4 74 08 71 71

Fax : +33 (0)4 74 08 71 72

[info@bmb-medical.com](mailto:info@bmb-medical.com)

100 Av. du Formans - CS 11001

01604 TREVOUX Cedex

FRANCE

[www.bmb-medical.com](http://www.bmb-medical.com)